

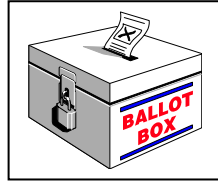


# Deephaven News

Information for City Residents [www.cityofdeephaven.org](http://www.cityofdeephaven.org) October, November and December 2004

## It's Election Time!

Elections for local, state and federal offices will be held on Tuesday, November 2<sup>nd</sup>. Precinct One residents vote at City Hall and Precinct Two residents vote at the St. Therese Community Room. The Mayor (two-year term) and two City Council (four-year terms) seats are open this year. The candidates for these positions include:



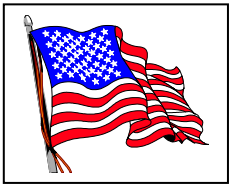
### Mayor

Tom L. Anderson  
Evonne Teuscher-Bak

### City Council

Darel Gustafson  
John Gresens  
Keith Kask  
Bob Kost  
James (Jay) Tucker  
John Wheaton

- ◆ **The League of Women Voters South Tonka is sponsoring "Meet the Candidates Night" on October 25<sup>th</sup> at Deephaven City Hall.**
- ◆ **The Excelsior Area Chamber of Commerce is sponsoring "Mayor Candidates Forum" on Thursday, October 7<sup>th</sup> at 7:00 p.m. to 9:30 p.m. at the South Shore Senior Center.**



## Residents may vote absentee

If you are not able to vote in person on Election Day, you may vote by absentee ballot. Ballots are available beginning Oct. 4th at City Hall. In

addition to the regular City Hall hours of 8:00 a.m. to 4:30 p.m., Monday – Friday, you may also vote absentee on Saturday, October 30<sup>th</sup> from 10:00 a.m. to 3:00 p.m. and on Monday, November 1<sup>st</sup> from 8:00 a.m. to 5:00 p.m. Please call 952-474-4755 if you have any questions.

## **We're looking for Warming House**

**Attendants!** If you are interested in working as an attendant at Thorpe Park or the City Hall warming house, please call City Hall at 952-474-4755 or stop by City Hall for an application. You must be at least 16 years of age by mid-December. Flexible work hours are available after school, on weekends and over school winter break.

## **Warming House Hours**

Weather permitting, the Thorpe Park and City Hall Warming House will be open starting on Saturday, December 18<sup>th</sup>. The warming house hours are as follows:

- ◆ Monday – Friday 4:30 p.m. to 9:00 p.m.
- ◆ Saturday 9:00 a.m. to 9:00 p.m.
- ◆ Sunday Noon to 9:00 p.m.

**The Deephaven Park Committee will be sponsoring an OPEN HOUSE at the City Hall ice rink on Saturday, December 18<sup>th</sup> at noon to kick off the ice skating season. Chili and "cold" drinks will be served. We hope you will join us!**

## **Speaking of the Deephaven Park Committee...**

The Park Committee would like to invite you to attend their October 6<sup>th</sup> meeting to participate in a discussion regarding Village Hall Park. If you have any special projects in mind or maintenance suggestions or any other issue that you would like to discuss regarding this park, please stop by City Hall on Wednesday, October 6<sup>th</sup> at 7:00 p.m. We hope to see you there!

If you have any issue that pertains to City parks, beaches and trails – the Park Committee would like to invite you to attend their meetings that are scheduled the first Wednesday of every month at 7:00 p.m. The meetings are always held at City Hall.

## **Police Chief Virgil Gustafson**

We are delighted to announce that the City Council has appointed Virgil Gustafson as Deephaven Chief of Police on August 16<sup>th</sup>. Virgil was appointed to replace former Police Chief Harlan Johnson who resigned from his position to become the executive director of the MN Chiefs of Police Association. Virgil has served as a police officer with the Deephaven Police Department since May 1, 1978. Please help Virgil to feel welcome in his new position.

## Mayor's Corner

Its election time again. Enclosed within this issue of the Deephaven Newsletter is a list of candidates for local Deephaven positions in City government. As a resident of Deephaven, it is your opportunity to express yourself at the ballot box. Be sure to VOTE on November 2<sup>nd</sup> at your local precinct.



On another issue, the dispute with South Lake Minnetonka Police regarding an automobile forfeiture has been resolved. The Judge recognized the need to preserve the mutual aid pact and awarded the car to Deephaven. We all hope this issue is now history and that we can get back to the level of respect and support that we have had between the two departments in the past.

As long as we are talking about the police department, enclosed in a recent article that appeared in the Star Tribune regarding serious crime. Please note that your community is at the top of the list when it comes to the lowest level of serious crime in the western suburbs. You live in the safest community in the western suburb thanks in large part to the outstanding police department that services your City. I suspect that a State-wide report would reflect the same level of performance. By now you have heard that Chief Johnson has gone into semi-retirement as he has accepted a position as Director of the State of Minnesota Police Chiefs Association. Much of this good work was done under his watch. Replacing Chief Johnson is Lieutenant Virgil Gustafson. Virgil was appointed Chief of Police to replace Harlan after scrutiny by a Civil Service Commission and your City Council. Thanks to Harlan for his many years of service and welcome to Virgil as our new Chief of Police. Virgil has expressed his support for continuation and expansion of community based policing. I am sure you will see Virgil and the other officers in your neighborhood even more than in the past. Please take time to meet them and get to know them when you see them.

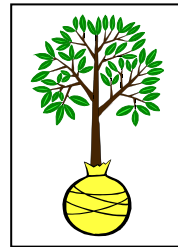


## Deer Management Program

The Deephaven City Council will be discussing plans for the 2005 Deer Management Program on Monday, October 4<sup>th</sup>. In 2004, the Department of Natural Resources granted the City permission to remove

40 deer, 18 of which were actually trapped and removed. Judging by the numerous phone calls received by City Staff, it is safe to say that there still appears to be an overpopulation of deer in certain sections of the City. Discussion on October 4<sup>th</sup> will include the amount of deer that the DNR will permit to be removed in 2005, continuation of the trapping program and on alternate methods of deer management.

For those truly frustrated by the overpopulation of deer, we have heard of a new product available in nurseries called "zoo-poop" fertilizer. As the name implies, the product is dirt mixed with manure from wild animals at the zoo. It sounds unusual but it supposedly works really well. The deer won't go anywhere near it because they assume there are wild predators around. You can only guess how truly desperate we are to provide some sort of solution to those individuals whose gardens are being ravaged by deer when we are now endorsing deer control products by the name of "zoo-poop".



## Dutch Elm Disease

Unfortunately, it appears that Dutch Elm Disease has returned with a vengeance throughout the metro area, including Deephaven. In response, the City of Deephaven has initiated a three-phase plan to control the spread of Dutch Elm Disease throughout our

community:

- ◆ Phase One: Survey and remove all diseased trees on public property (100% completed)
- ◆ Phase Two: Conduct windshield survey of diseased trees on private property (85% completed)
- ◆ Phase Three: Notify public of requirement to remove diseased trees (40% completed)

A little more explanation is needed to describe Phase Three because there may be a direct impact on you depending on the existence of Dutch elm disease on your property. Section 805.04 of the Deephaven City Code grants the City the authority to control and eliminate Dutch elm disease fungus, elm bark beetles, oak wilt fungus and any other disease that is harmful to shade trees with the City. A Deephaven Tree inspector will be driving throughout the city to survey all diseased trees that are noticeable from the public street. Please note that the Deephaven Tree Inspection has been authorized by the Deephaven City Council to enter upon private property to mark diseased trees. If your tree has been marked, you will receive a certified letter from the City with instructions and timelines for the removal of the diseased tree(s).

We thank you in advance for your assistance in controlling the spread of this malicious disease.

## 2005 Budget

The Deephaven City Council certified the 2005 General Fund and Capital Improvement Fund levy on September 2<sup>nd</sup>. The public is invited to comment on the 2005 annual Truth-in-Taxation hearing scheduled for December 6<sup>th</sup>. Hennepin County will notify all property owners within Deephaven of the meeting later this year. The following is a brief summary of the 2005 Budget:

**General Fund Revenues** - Total 2005 General Fund Revenues are budgeted at 2,132,720 and consist of eight major budget categories:

Category	2005 Budget	% of Revenues
Taxes	1,434,078	67.2%
Licenses & Permits	190,600	8.9%
Intergovernmental	62,201	2.9%
Charges for Services	275,544	12.9%
Interest Income	61,000	2.9%
Fines & Penalties	70,000	3.3%
Transfers from Other Funds	18,725	0.9%
Miscellaneous	20,572	1.0%
<b>Total 2005 Revenues</b>	<b>2,132,720</b>	<b>100.0%</b>

## 2005 Revenue Highlights –

- ◆ 2005 General Fund revenues have increased \$11,080 or 0.5% over 2004 General Fund revenues
- ◆ The 2005 General Fund property tax levy is scheduled to increase \$8,982 or 0.6% over the 2004 General Fund property tax levy.
- ◆ Service contracts with the cities of Woodland and Greenwood combine to equal 11.3% of 2005 General Fund revenues.

**General Fund Expenditures** – Total 2005 General Fund Expenditures are budgeted at \$2,122,720 and consist of twelve major departments:

Department	2005 Budget	% of Expenses
Administration / Elections	277,197	13.1%
General Government	181,305	8.6%
City Hall Buildings	35,200	1.7%
Zoning / Building Inspections	177,107	8.3%
Streets & Roads	78,000	3.7%
Public Works	350,889	16.5%
Parks & Recreation	57,750	2.7%
Police	594,767	28.0%
Fire Services	293,560	13.8%
Emergency Management	45,595	2.1%
Recycling	14,700	0.7%
Animal Management	16,650	0.8%
<b>Total 2005 Expenditures</b>	<b>2,122,720</b>	<b>100.0%</b>

## 2004 Expenditure Highlights –

- ◆ Total 2005 General Fund Expenditures increased \$45,290 or 2.2% over 2004.

- ◆ The increase in 2005 expenditures is due primarily to increases in property/liability insurance, street maintenance, building inspection contract services and one additional part-time public works staff.

**Capital Improvement Fund** – The Capital Improvement Fund (CIF) is a critical fund that finances the replacement of all street, police and park equipment and vehicles and also finances all street improvement projects. Since the depletion of CIF cash reserves in 2001, the only source of funding for the CIF has been \$600,000 in transfers from General Fund cash reserves in 2002 and 2003 and approximately \$92,000 per year in franchise fees from Xcel Energy and CenterPoint Energy. Beginning in 2005, a \$160,000 property tax levy has been included in the CIF in order to support the future schedule of street projects, vehicle replacement and equipment purchases that are planned over the next 10-20 years.

**2005 Property Taxes** – With an \$11,202 increase in the General Fund levy and a \$160,000 increase in the Capital Improvement Fund levy, the 2005 property tax levy is expected to increase \$171,202 or 12.3% in 2005. Despite this significant increase, the 2005 tax capacity rate is expected to be less than the 2004 tax capacity rate – 18.311% in 2005 versus 18.663% in 2004. Will this lower tax rate in 2005 result in lower city taxes? Probably not, as the increase in the 2005 estimated market value of most properties in Deephaven will likely result in an increase in the amount of taxes that are paid to the City of Deephaven.

## The Aliens are Attacking!

Deephaven and many areas in Minnesota are being invaded by exotic species such as Buckthorn, Milfoil, Purple Loosestrife, Zebra mussels, and many others. On behalf of the Deephaven Park Committee, we would like to educate you on the threats and enlist your help in the control or eradication of these non-native plants and animals. These aggressive organisms are hurting our parks and pose a threat to our beaches.

### Common Buckthorn:

Appearance: Tall understory shrub or small tree up to 20' high with a spreading loosely branched crown, often multiple stems at the base. Brown bark with elongate silvery corky projections (Caution: native plums or cherries have a similar bark).

Branches: Cut branch exposes yellow sapwood and orange heartwood. Twigs often end in stout thorns.

Leaves: Alternate, sometimes opposite; broadly elliptic pointed at the tip, smooth, dark glossy and small-toothed. Leaves stay green late into fall so look for Buckthorn in the fall to pull or cut.

Flowers: Inconspicuous, appear in May or June, clustered in the axils of leaves.

Fruit: Clusters of black ¼ inch fruit ripen on female plants in August and September. Seeds are viable for 2-3 years in the soil.

Roots: Extensive fibrous root system.

#### *Ecological Threat:*

Aggressively invades oak forests, savanas, prairies and riparian woods, completely eliminating native plant diversity in the understory over time. It thrives particularly on well-drained soils. Introduced to North America as ornamental shrubs. Plants leaf out early and retain leaves late into the fall creating dense shade. Seeds have laxative effect on birds who disperse them. Common Buckthorn is on the Minnesota Dept. of Agriculture Restricted noxious weed list in Minnesota.


#### *Control Methods:*

Action – Please remove all Buckthorn from your property as the seeds can be spread by birds to your neighbor’s yards, your parks and the rest of the community.

Mechanical – Pull small infestations (use your hands, shovels, weed wrenches, etc.).

Chemical – Cut-stump treatment with glyphosate (Roundup); cut-stump or basal bark spray treatment around the stem with triclopyr (Brush-B-Gon).

Source copyright and permission for reprint requested of the Minnesota Department of Natural Resources by Jim “Woody” Woodburn, Chairman, Deephaven Park Committee

 **Rake-A-Thon celebrates 17 years**  
If you are a senior, or can not rake your lawn due to a disability, the rake-a-thon can help you! A team of volunteers will rake and bag your leaves. Best of all, the service is free! The event is scheduled for Saturday, October 30<sup>th</sup>. Minnetonka Community Education and Services (MCES) sponsors this free event. To register to have your yard raked, please call 952-474-7635. If you would like to volunteer your time to rake someone’s yard, please call Julie at MCES at 952-401-6828.

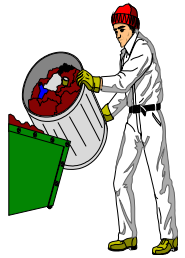
### **Ghosts & goblins at Police station**

The police department will host a Halloween Open House at City Hall. Wear your costume and come visit us on October 31st from 5:00 p.m. to 7:00 p.m.



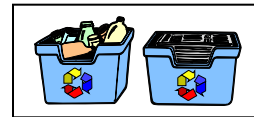
### **Annual leaf and yard waste collection**

Autumn leaf pick-up for our residents is Saturday, October 30. *This is for curbside pick-ups only and will begin at 7:00 a.m.* No drop-offs at City Hall. Please observe these requirements:



- Brush must be cut and bundled with string; branches can not exceed four feet in length and four inches in diameter.
- Leaves and yard waste must be bagged.
- Bundles and bags can not exceed 40 pounds.

On a related topic, please do not rake leaves onto the street. It creates a hazard for motorists, especially when leaves become wet. When applying the brakes, a vehicle may skid on wet leaves much like they do on icy roads. Consider your neighbors and keep leaves off the street.



### **Recycling and garbage news**

**HOLIDAYS!** Remember garbage and recycling pickup is one day later on Thanksgiving, Christmas, New Year’s Day, Memorial Day, Fourth of July, and Labor Day. ***Please put your garbage and recycling out so that it can be seen from the street by 7:00 a.m.!***

### **Winter trail activities**

The City will maintain the LRT trail for winter use from November 15 to March 31. Half the trail will be plowed for those who jog and walk. The other half will be left with snow for cross-country skiers.



### **Southshore Community & Senior Center**

The Center is open Mondays, Tuesdays and Fridays, from 8:30 a.m. to 3:30 p.m. It is located at 5735 Country Club

Road in Shorewood, near the County Road 19 intersection. Call 952-474-7635 for more information.

